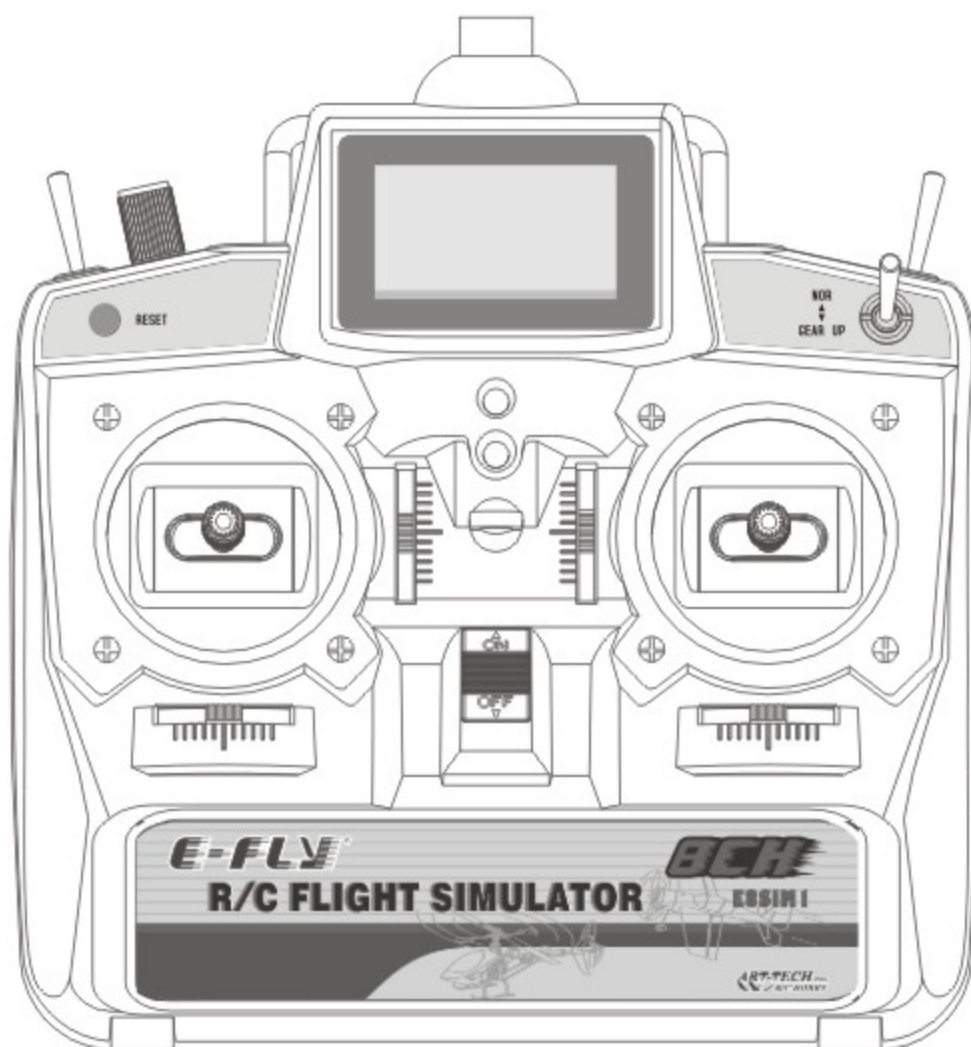




E8SIM1 is a high-quality, fully-featured 8 channel controller

# LCD digital proportional simulator control system



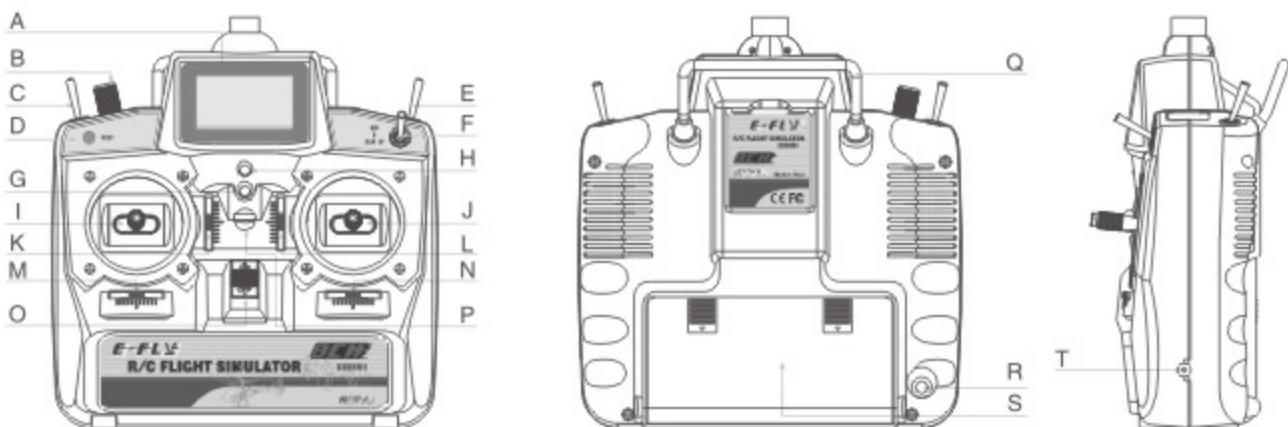
Operating manual

This is a versatile and fully-featured simulator controller and has a similar look to the E-FLY 100-C transmitter. This controller can be supplied with 8XAA battery, NiCd/ Ni-MH or Li-Po battery.

### Functions:

E8SIM1 is a newly developed 8 channel proportional controller. The output signal of E8SIM1 is standard PPM signal. With different usb cables, This simulator can be compatible with many Simulation Flight Software, such as FMS. The LCD screen shows the voltage of the controller, and features an auto-alarm when power is slow.

### Transmitter introduction:



- A: LCD(Liquid Crystal Display)  
Indicates the current power-level of your controller.
- B: Knob for channel 8  
This knob controls to output an channel signal between 1ms and 2ms.
- C: Throttle hold switch.  
This switch cuts the throttle channel for Autorotations.
- D: Reset button  
This button instantly resets the simulated model to the default starting position.
- E: 3D switch  
This switch places your model into 3-d/idle-up mode for 3-d helicopter flight.
- F: Retract gear switch.
- G: LED Indicator for Power.
- H: Red LED Indicator for low Voltage: When the power-level is under 8.5V, the LED will flash. The LCD will cut off when the voltage drops below 7.6V. Note: When red LED flashes or nothing shows on LCD, please change the battery.
- I: Joystick  
1) If the transmitter is Mode 1, this controls rudder and elevator.  
2) If the transmitter is Mode 2, this controls rudder and throttle
- J: Joystick  
1) If the transmitter is Mode 1, this controls aileron and throttle.  
2) If the transmitter is Mode 2, this controls aileron and elevator.
- K: Elevator trim lever (mode 1)  
Throttle trim lever (Mode 2)
- L: Throttle trim lever (Model 1)  
Elevator trim lever (Model 2)
- M: Rudder trim lever (Model 1)
- N: Aileron trim lever.
- O: Power On / Off Switch.
- P: Neckstrap Connector.
- Q: Carrying Handle.
- R: Plug for Simulator USB interface.
- S: Not available.
- T: Mains power supply recharging socket.

## Detailed descriptions:

### LCD (Liquid Crystal Display) screen

The screen shows the power voltage of your controller.

### Throttle-hold switch

This switch cuts the throttle to the idle position, so it is no longer controlled by the throttle stick. This is usually used to practice helicopter auto-rotations.

### NOR-3D switch

This switch can also be called Idle-up switch, and sets the throttle curve to a "V" shape used for flying 3-d manoeuvres when piloting helicopter models.

### Flaps/tilt-rotor knob

This knob controls flaps when piloting fixed-wing models, and the engine nacelle angle when flying a tilt-rotor model.

### Reset button

Press this button to instantly reset the simulated model back to the default starting position.

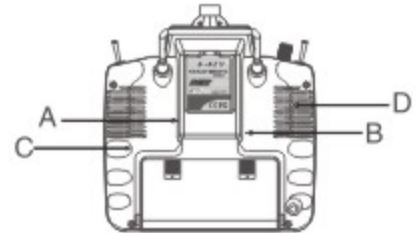
### Retractable landing gear switch

This switch retracts or extends the landing gear on models equipped with this capability.

### Mode I and Mode II setting :

If you want to change "Mode I" to "Mode II", loosen the screw A and C, tighten the screw B and D.

If you want to change "Mode II" to "Mode I", loosen the screw B and D, tighten the screw A and C.



## Operation

As the output signal of this controller is standard PPM signal with audio interface, with different cable, this simulator can be used with different simulation software, such as FMS, Phoenix RC, and so on.

*Tip: If the audio interface of the cable can not plug into the socket, please use the audio converter*



### With FMS

*Tip: with FMS, only 4 channels can be identified.*

Using FMS, you need a cable, as shown in the picture. You need not and should not use the audio converter when using the cable from ART-TECH.



### With PHOENIX RC

Using PHOENIX, you need a cable, as shown in the picture.



For details, please refer to instruction of PHOENIX RC.

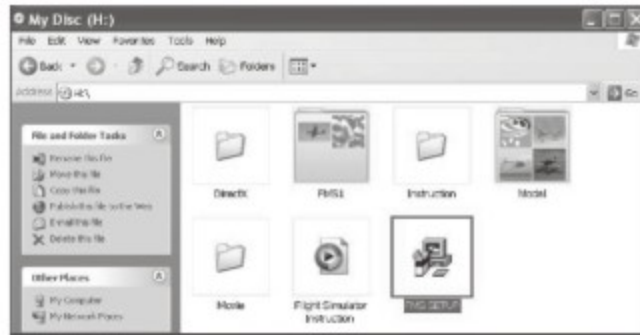
USING WITH OTHER SIMULATION SOFTWARES ARE NOT SPECIFIED HERE!


## Install steps of FMS:

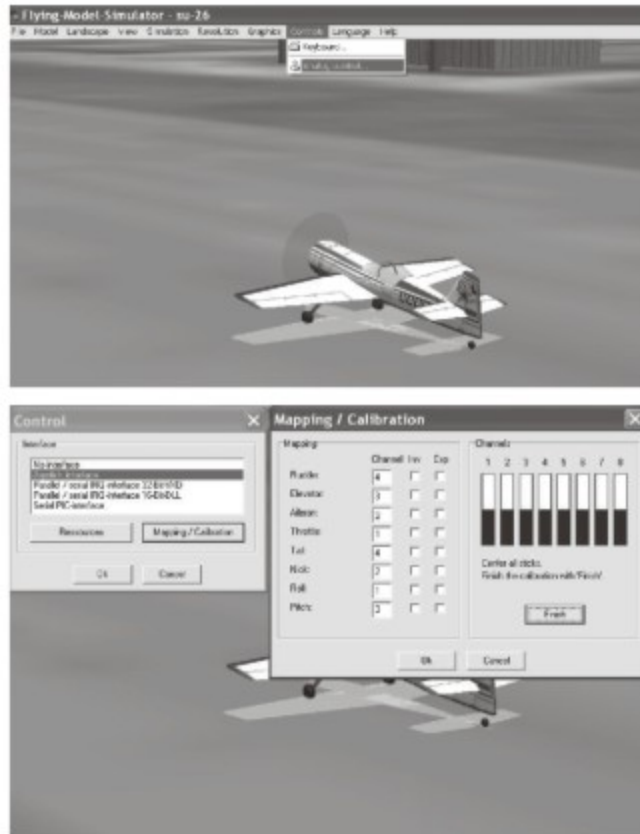
The detailed description of this software used with FMS(4CH) is according to the following sample:

Insert the CD-Rom, and connect the transmitter and the computer with the USB cable.

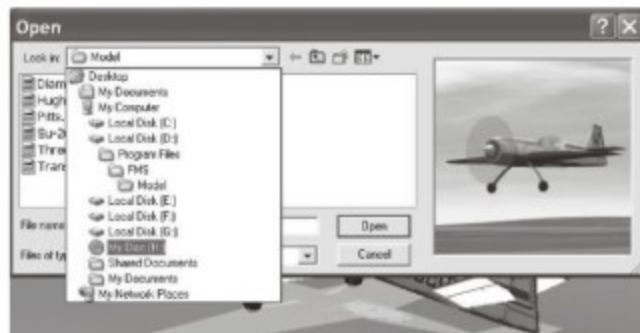
 Click ,  and open it, click  to setup the FMS software.



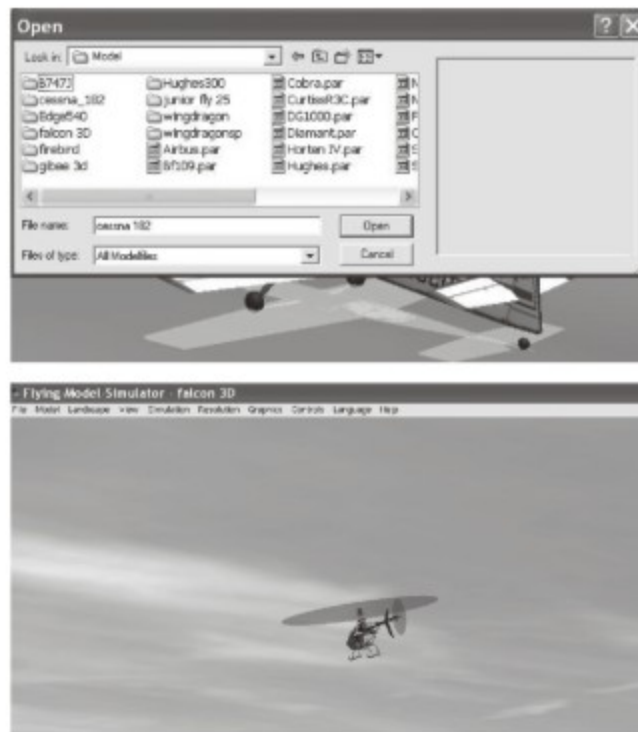
Click  to run "FMS", click "Controls" and select "Analog control..", Choose the **Joystick interface**, then click **Mapping / Calibration**. Click "Calibrate".




Move all joysticks to calibrate the radio. Move aileron joystick to calibrate like the channel 2, move elevator joystick to calibrate like the channel 3, move throttle joystick to calibrate like the channel 1, move rudder joystick to calibrate like the channel 4. Setup the channels following the figure of the right. (4,3,2,1,4,3,2,1). Then click "Next". Click "Finish" completing the calibration.

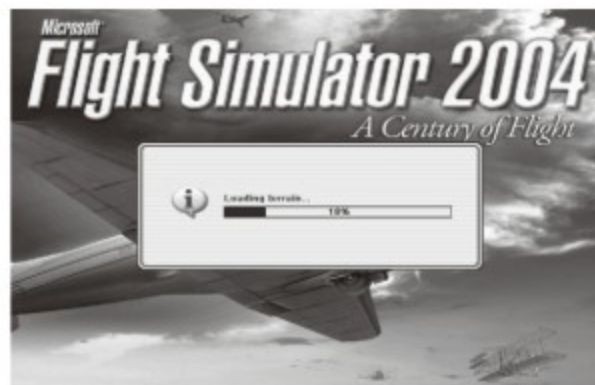


Choose the plane which one you like, and now, everything is ready, you can fly it. You can also fly it in a moment you like.

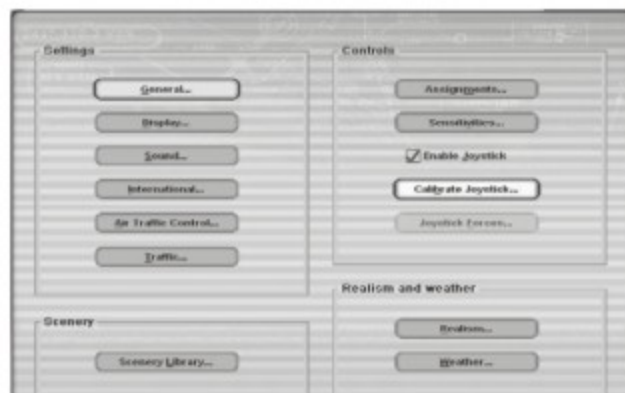


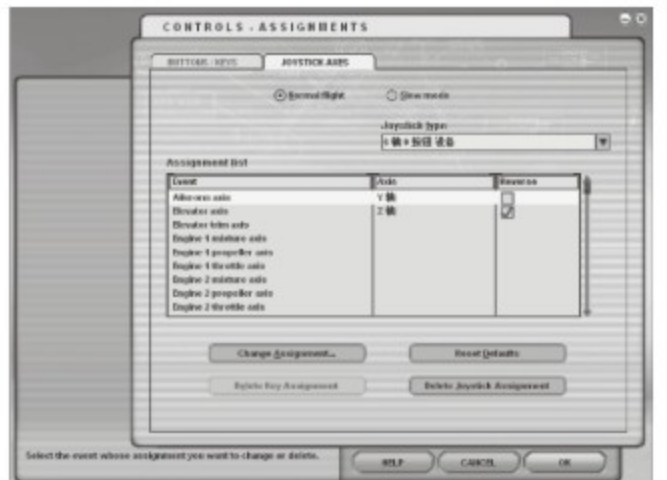
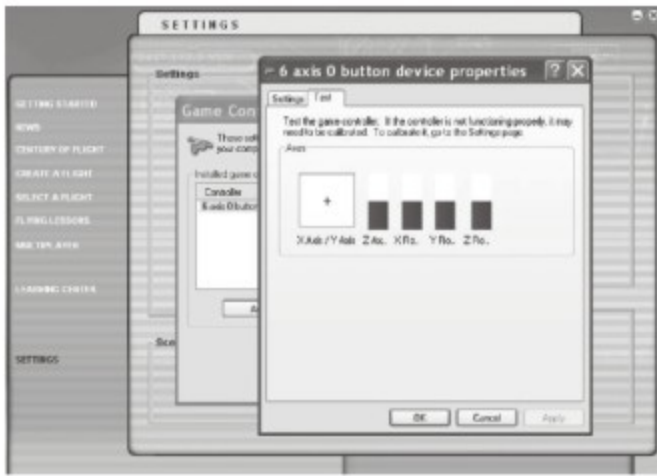
## Microsoft \* Flight Simulator 2004

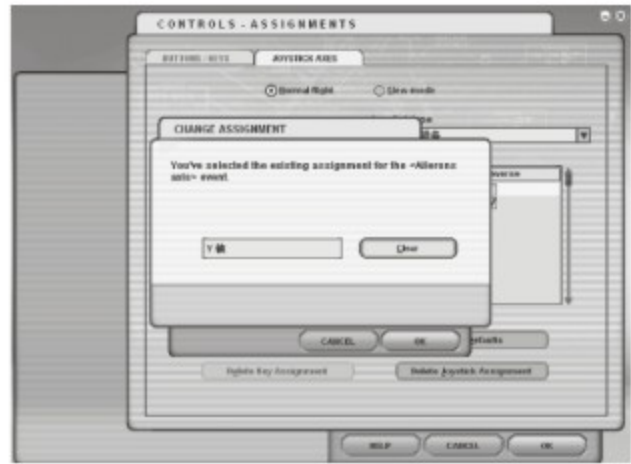
Click  and run it.



Choose  **Enable joystick**, and click **Calibrate joystick...** to calibrate joysticks following the figure.







Now, everything is ready, you can fly it at the moment.



Review the video show in disc for use in detail.

- \* Mark just for display, All relevant intellectual property belongs to Microsoft Co.,LTD
- \* For more details about FMS, please refer to its official website.



Specifications may change without notice, please refer to the real one for configuration. 2009.05